

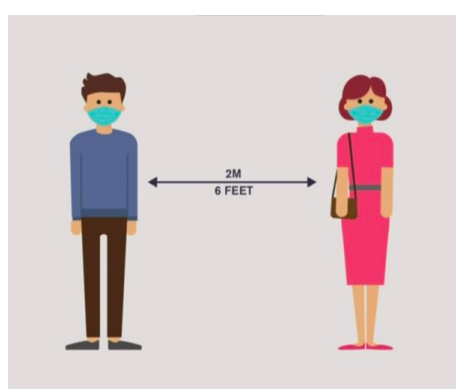
GUIDELINES FOR ATTENDING IN-PERSON SUNDAY SCHOOL AT JESSE LEE CHURCH

Following these simple steps will
keep us all safe and well.



1 REGISTER TO ATTEND IN-PERSON WORSHIP

Please use SignUp Genius (see link below) to let us know your child will be attending in-person Sunday School at the 9:30 a.m. service. This helps us ensure we can adhere to the CDC's social distancing guidelines.



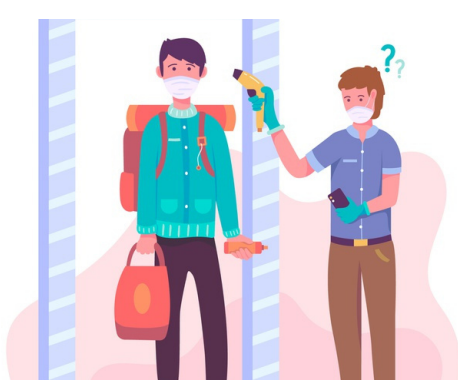
2 STAY 6 FEET APART

Before, during and after services, please stay six feet apart from others who are not in your family. During this Pandemic, we will not be able to congregate anywhere in or around the sanctuary or in the parking lot.



3 WEAR A FACE MASK

Face masks are required to enter into the sanctuary and the Sunday School classroom space in Martin Hall. If you don't have one, we've got you covered. We will give you a brand new one at the door.



4 CHECK IN AT THE DOOR UNDER THE BRIDGE

We will use the SignUp Genius list of registered attendees to check you in at the door. We will also use a touchless thermometer to take everyone's temperature to make sure all who come in are fever-free.



5 FOLLOW THE SIGNS

We will have signs posted and arrows on the floor to guide you in and out of the Sunday School classroom area in Martin Hall. Please check in under the bridge and Miss Carrie will direct the kids downstairs via the stairwell by the elevator. At the end of worship, parents can come down these steps to pick up their kids and then continue down the hall to exit out the Martin Hall patio doors.



6 ON YOUR WAY OUT

As you exit the church, remember to maintain social distancing. Please do not congregate in or around the church, or in the Jesse Lee parking lot.